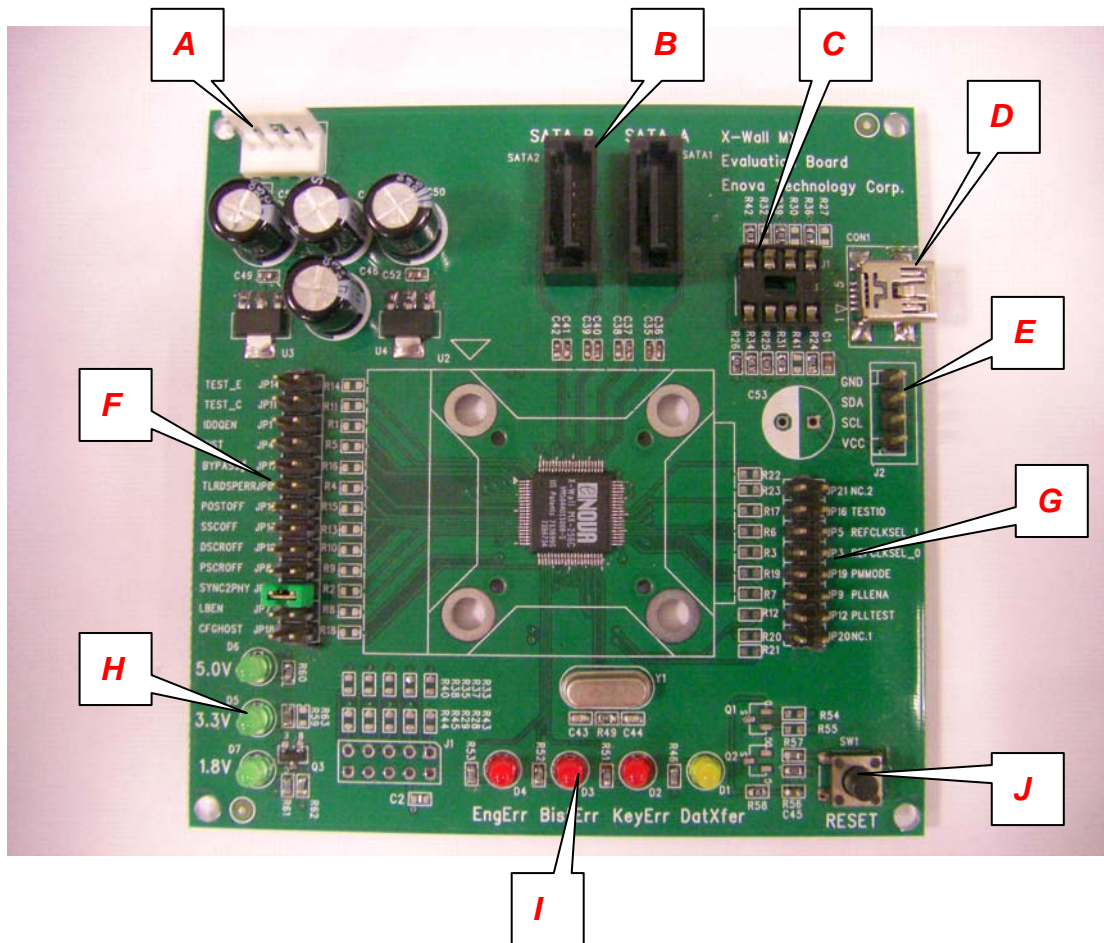


## X-Wall MX Development Board Quick Guide\_New Rev 1.0



**Table 1 – Description for various partitions**

Partition	Description
A:	Small 4-pins power connector (Connect to power supply). See this embedded picture of the power cable from a host PC.



B:	SATA Connectors SATA_A – Connect to motherboard using standard SATA cable SATA_B – Connect to hard disk using standard SATA cable
C:	24C02 EEPROM socket (PDIP 8) for external key token
D:	Mini-USB connector used to connect 24C02 EEPROM for external key token
E:	4-pins pin header that can be used to probe I2C signals
F:	Jumper Setting Group 1 (See detailed description below)
G:	Jumper Setting Group 2 (See detailed description below)
H:	Power LED indicators
I:	Status LED indicators
J:	Reset button
Note: Use either C (PDIP 8 socket) or D (Mini-USB connector) to connect to external EEPROM for key token.	

The following Table 2 & 3 describe the value when jumper is set. Please reference to the X-Wall MX Design Guide for each specific meaning.

**Table 2 - Jumper Setting Group 1 (From TOP to BUTTOM)**

	NAME	OPEN	CLOSE
JP14	TEST_E	0	1
JP11	TEST_C	0	1
JP1	IDDQEN	0	1
JP4	BIST	0	1
JP17	BYPASS#	1	0
JP6	TLRDSPERR	1	0
JP15	POSTOFF	0	1
JP13	SSCOFF	0	1
JP10	DSCROFF	0	1
JP8	PSCROFF	0	1
JP2	SYNC2PHY	0	1
JP7	LBEN	0	1
JP18	CFGHOST	1	0

**Table 3 - Jumper Setting Group 2 (From TOP to BUTTOM)**

	NAME	OPEN	CLOSE
JP21	Not Used	1	0



JP16	TESTIO	0	1
JP5	REFCLK_SEL_1	0	1
JP3	REFCLK_SEL_0	0	1
JP19	PMMODE	1	0
JP9	PLLENA	1	0
JP12	PLLTEST	0	1
JP20	Not Used	1	0

**For quick installation:**

1. Connect power connector;
2. Connect SATA\_A connector to your motherboard;
3. Connect SATA\_B connector to your hard disk;
4. Leave C and D open to allow X-Wall MX, after being power on, to accept a key delivered from either an external key token or through API command; Note that without either the on-board EEPROM or the external key token, the X-Wall MX is in a standby mode waiting to receive a valid AES secret key;
5. Alternatively, insert PDIP-8 24C02 EEPROM into socket at C to start the X-Wall MX crypto function;
6. Set JP2 (CLOSE);
7. Power on.